

The
AutoLog[®]
Family
presents



AutoLog[®] Success Story



We've got it under control
Sophisticated Control Technology

Iranian Central Oil Field Company, AutoLog[®] RTU's & SCADA
Telemetry & Telecom system



FF-AUTOMATION OY

Iranian Central Oil Field Co.
Telemetry, Telecom
AutoLog® RTUs & SCADA



FF-AUTOMATION OY

AutoLog® Success Story



Description

FF-Automation supplies telemetry (RTU) system to the biggest Iranian oil supplier, Iranian Central Oil Field Company (ICOFC).

The project consist of a number of gas wells, Line Break Valves, gathering and trunk pipelines, treating facilities and residential area.

The ICOFC company supervises all the Iran's onshore oil and gas production fields with the exception of the fields supervised by the National Iranian South Oil Company.

The company has crude oil production in addition to operating 62% of Iran's gas production capacity.

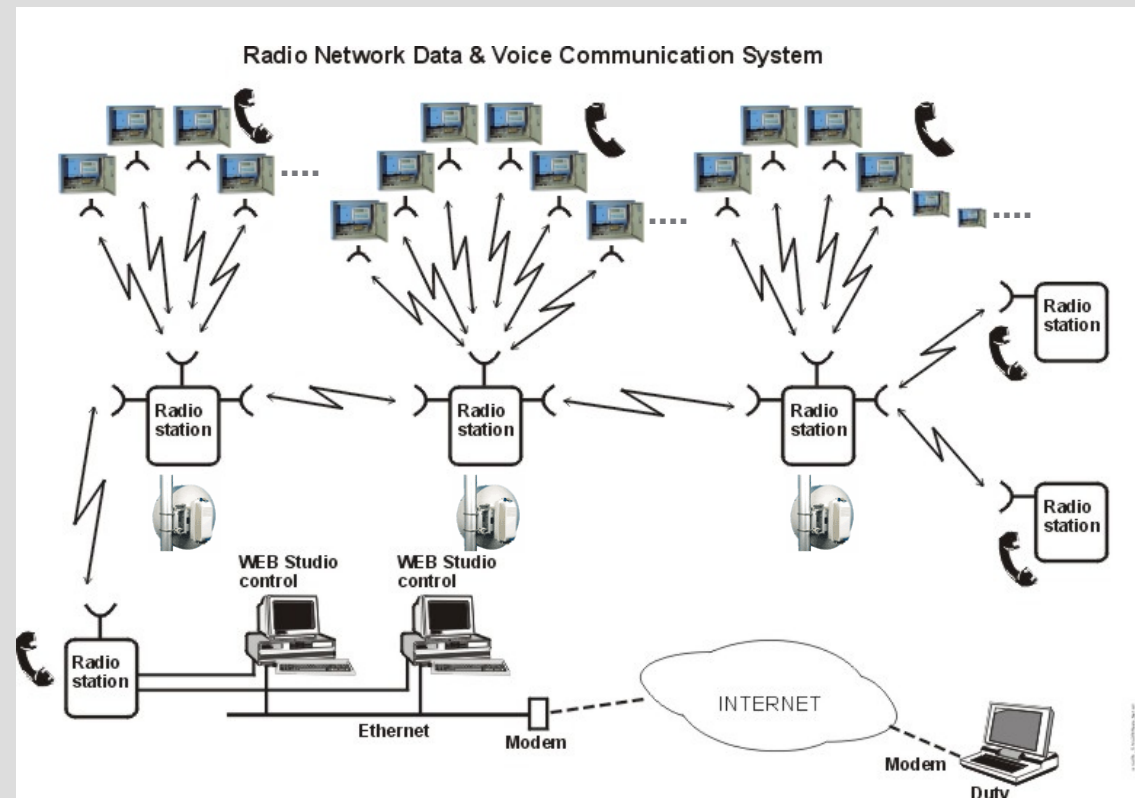


Subcompany:
Iranian Central Oil Fields Company-ICOFC



Control system

The telemetry system will include several AutoLog® 20 RTU substations, redundant Web Studio central control room and remote control room. One AutoLog® 20 RTU has max. 72 I/Os.



The same 2,4 GHz E1 radio network is used for voice and Control System data communication.



AutoLog® RTUs & SCADA

The project will include programming the AutoLog® RTU and SCADA applications and commissioning.

The customer chose FF-Automation as the Control System supplier because of the good features of the offered system and the technical knowhow to help designing the optimal telemetry system for the customer. FF-Automation has many references of similar AutoLog® RTU projects.

The project will be commissioned within the year 2004.



For more information
about FF-Automation and
the AutoLog® range of
control products and
automation solutions,
please open

www.ff-automation.com



FF-AUTOMATION OY

Head Office:

Eräkuja 2, 01600 Vantaa, Finland

tel: +358 9 530 6310

fax: +358 9 530 63130

e-mail: info@ff-automation.com

Factory:

Valkeakoski, Finland