

The
AutoLog®
Family
presents



We've got it under control
Sophisticated Control Technology

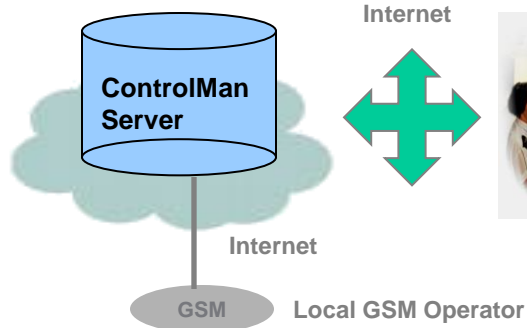
AutoLog® Application Note 102: Flood Detection System



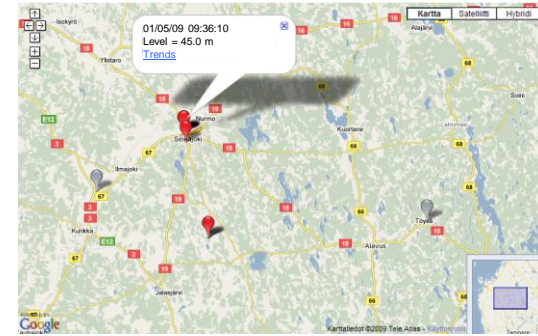
FF-AUTOMATION



Application Note 102: Flood detection system



Multiple users
 -Doesn't need special software.
 -Works with normal web browser and gsm WAP browser .
 -Anywhere!

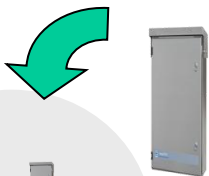


Flood detection units can be seen on the map

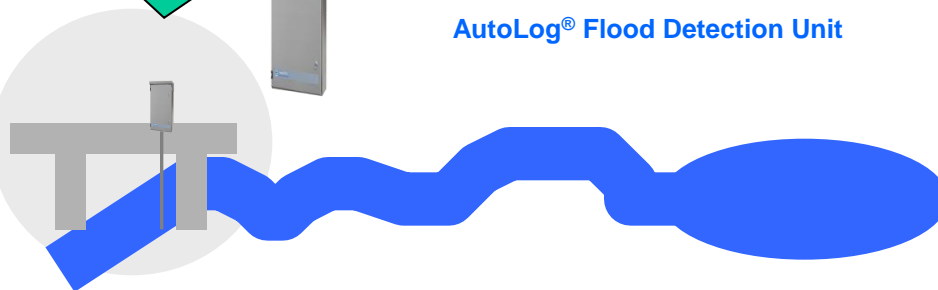
GSM / GPRS



Warnings can be send to GSM phones or e-mails, Before its too late!

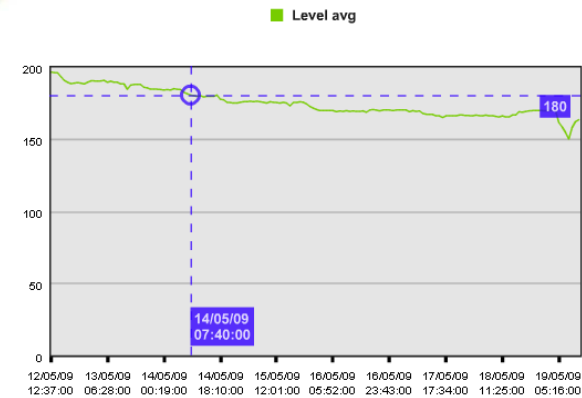


AutoLog® Flood Detection Unit



Easy expansion. Supports 1000+ units

e.g. Bridge installation



Surface level, temperature, rainfall, accu voltage can be seen in historical trend line



Application Note 102: Flood detection system



OPERATION:

- Measures water level according to configured 0-level (meters from sea level), e.g. [N43] standard in Finland. Optionally measures temperature and rainfall.
- Measurements are logged in the memory.
- Sends measurement log to ControlMan server using GPRS or SMS. Sending and logging periods can be configured.
- Measurement period is adjusted automatically when the water level changes fast.
- Operates with accumulator. Operation time (2 weeks to 1 year) depends on the GPRS sending period and accumulator size.
- Configurable alarm level, sends immediately alarm SMS message to server. Alarms can be forwarded to GSM phones or/and e-mails.
- Current measurement report can be asked using any GSM phone.

CONTROLMAN (User Interface)

- In the AutoLog ControlMan the measurements are stored to database and can be analysed in trends, alarms and map views. Works in Internet and WAP interfaces.
- New configurations can be send remotely to Flood Detection Unit. Configurations can be also sent with GSM phone.

BENEFITS:

- Water levels can be monitored and historical data can be analysed and reported. Flood situations can be estimated and flood protection walls, evacuations etc. can be planned according to measured data.
- Controlling dams according to measured water levels.
- Fast installation. Can be moved and installed and configured on flood area.
- ControlMan interface can be used from any PC (with Internet connection).
- ControlMan server is maintained by internet server hosting company so user doesn't need own server PC or maintenance personnel.

GSM / GPRS

• Level

**AutoLog®
Flood
Detection
Unit**

Rainfall

Surface level

SUBMERSIBLE SMART DIGITAL SENSORS

- Level
- Temperature
- ODOT, OPTICAL DISSOLVED OXYGEN
- pH, REDOX & Temperature
- Turbidity, 0-50NTU... – 4000NTU
- Conductivity/Salinity, 0-200uS/cm ... – 200mS/cm

SUBMERSIBLE FLUOROMETER SENSORS:

- Turbidity,
- Chlorophyll,
- Blue Green Algae,
- Fluorescein Dye,
- Rhodamine Dye,
- CDOM,
- Optical Brighteners for Wastewater Treatment,
- Crude Oil,
- Refined Fuels,

