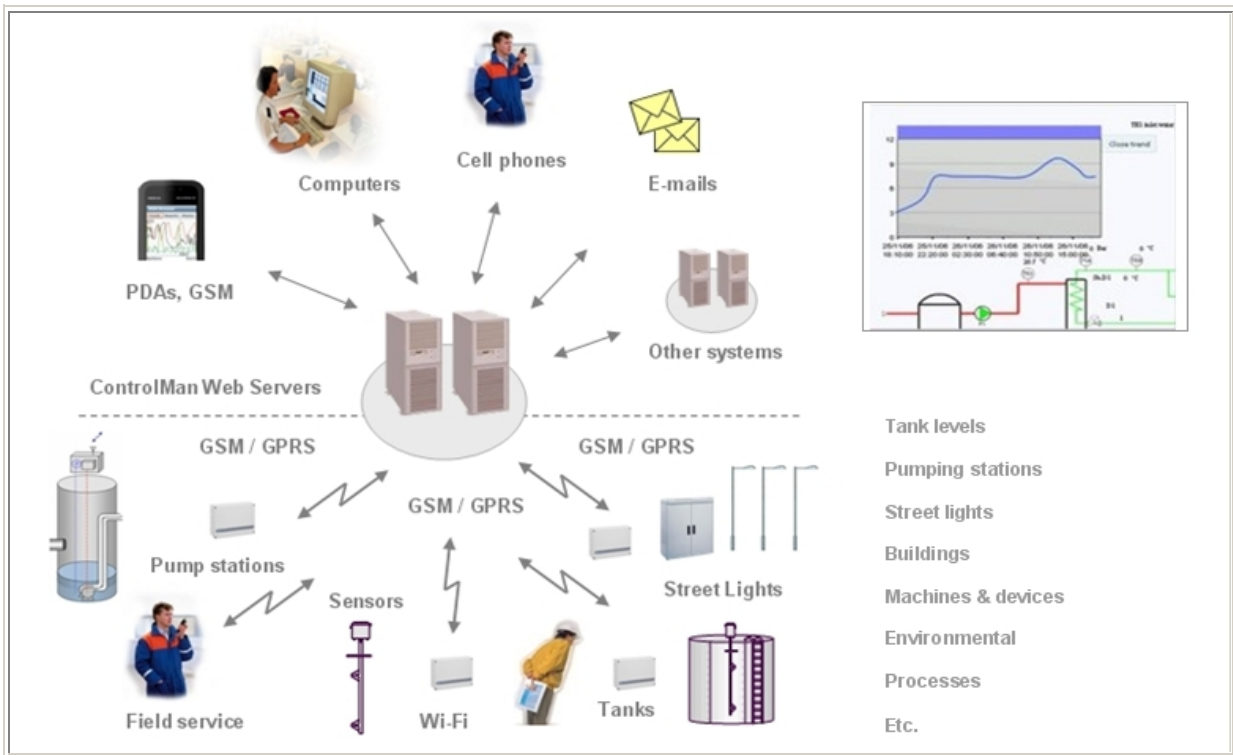




>>FF-Automation News: Week 49 / 2009, AutoLog ControlMan

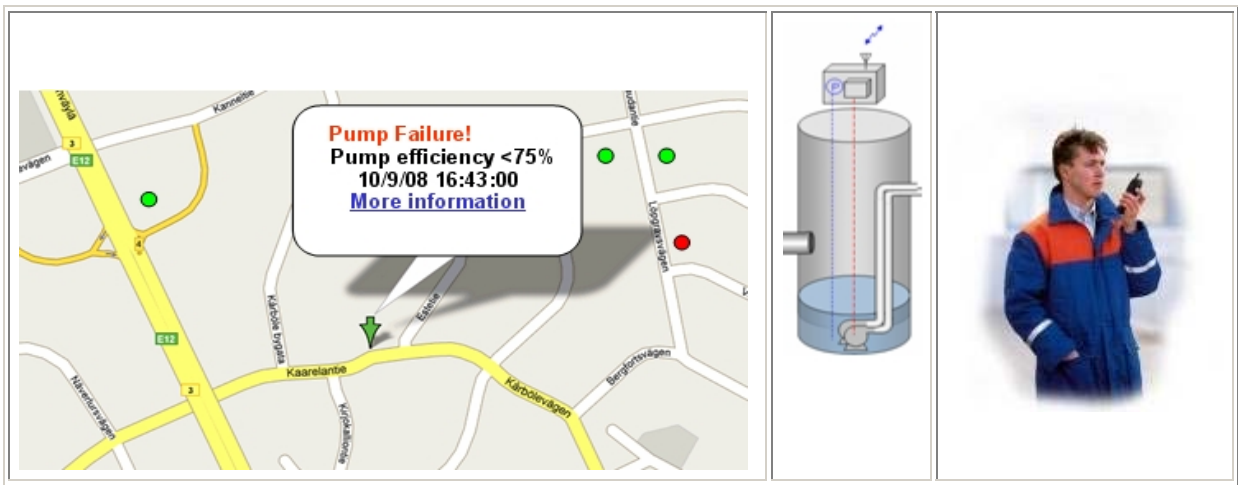
Wireless Monitoring & Controlling as Web-service!



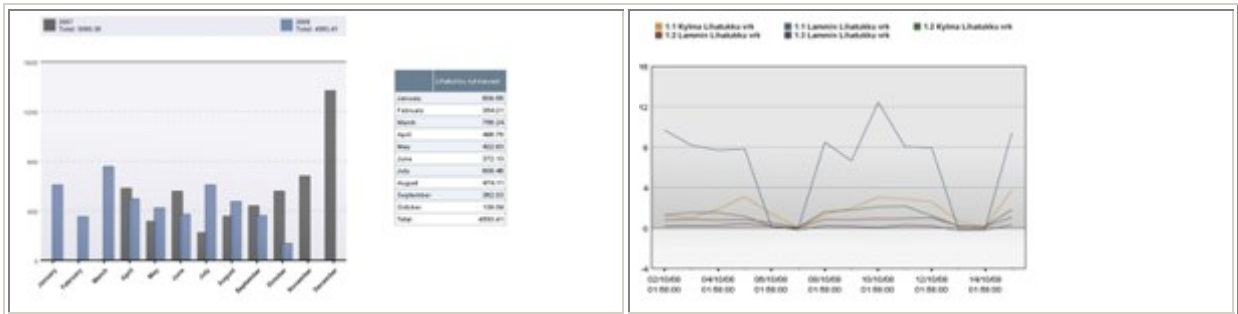
FF-Automation's [AutoLog ControlMan](#) is ultra modern and cost effective solution for remote monitoring and controlling. It is suitable for remote monitoring and controlling almost anything: machines, devices, processes, pipelines, tanks, street lights, pumps, valves, real estates, unmanned stations, cold rooms, cargoes, environment, flood detection, oil & gas applications etc. If you have many targets which are hard to reach and you want to have a way to monitor and control them, then AutoLog ControlMan is most likely what you are searching for - and most likely it's more!

AutoLog ControlMan is complete solution which includes both programmable GSM control units and hosted Internet application service. Programmable control units (AutoLog GSM-RTUs) are installed along the remote targets to perform measurement and control tasks. Control units are communicating

wirelessly through GSM network. ControlMan web service is used with web browser through Internet.



In the picture there's example of typical ControlMan project case. AutoLog GSM control unit has analyzed its measurements and detected pump failure in sewage station. Failure alarm is send wirelessly through GSM network to CM server. From the server the alarm is then automatically forwarded to on-duty service man's GSM phone. Service man has laptop with wireless Internet connection so he just logs in to ControlMan service and checks the situation.



ControlMan has versatile *Graphical User Interface* including dynamic maps, measurement trends, alarms views, animated process views, reports etc. Service man can get clearer picture from the cause of this alarm by checking the pump's daily operating times, efficiency histories etc. He can plan the needed repair work beforehand.

BENEFITS:

- Cost effective and care-free solution. No need for expensive control room server PC, new operator workstations. No need for own maintenance personnel.
- Uses existing and global GSM and Internet communication solutions. No network investment costs.
- Maintenance changes and application programming can be done remotely. No need for expensive on-site maintenance visits e.g. when adding new devices.
- Long term solution - very flexible for future expansions and integrating with new technologies. Based on mainstream technologies.
- Easy to use interface to analyze and learn the behavior of remote targets and react to possible failure or abnormal situations before it's too late.
- Increase total income. Increased productivity, less failures, less on-site visits.
- Shared knowhow. Information can be shared between authorized user groups with different user levels. - Also management knows what is happening!
- Critical alarms are automatically detected and send immediately to repairman's mobile phone or e-mail. Automatic work order generations.

Solutions for End customers and System Integrators

FF-Automation makes complete turnkey projects for remote monitoring and controlling applications. FF-Automation can also make very beneficial agreements with distributors and system integrators.

[Click here for more information!](#)



FF-Automation Oy

www.ff-automation.com

Jukka Fredriksson

Eräkuja 01600 Vantaa

Finland

Tel. +358 9 530 63112

jukka.fredriksson@ff-automation.com