

A U T O L O G ® D A T A S H E E T



A U T O L O G ® Pump Station Automation System

S O P H I S T I C A T E D ® A U T O M A T I O N

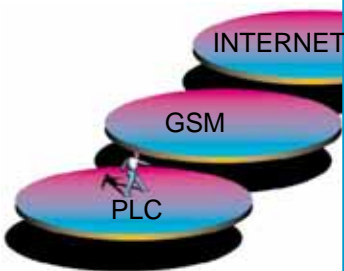
Remotely controllable automation solution for wastewater pumping stations.



Alarms and maintenance reports to / from GSM phone.



Internet SCADA works everywhere!



Automation Manufacturing

 1976

AutoLog® Pump Station Automation System is Remote Control and Maintenance solution for wastewater pump stations.

AutoLog® GSM-RTU controls one or two sewage pumps to maintain water level within normal limits. System detects variety of abnormal pump station conditions and sends alarm messages immediately to Internet SCADA and to service men's GSM phones.

When water level exceeds the defined high level limit, the previous pump station is commanded to stop pumping.

System calculates the pump's efficiency curve, which can be analyzed in the internet SCADA view. The efficiency curve shows situation when pump is slowly jamming or wearing.



AutoLog® GSM-RTU

AutoLog® Pump Station Automation System

Pumps efficiency factors are calculated in GSM-RTU. Decreasing efficiency factors can be seen in the SCADA's trend diagrams. Service man can be send on-site to check the pump status.

Pumps operation times and -counts can be analysed in SCADA's diagrams. Abnormal situations can be seen. Using the pump's power consumption factor, approximate power consumption and costs can be calculated.

Energy consumption can be calculated accurately if the pumping station is equipped with energy meter with pulse output or modbus interface. Diagrams can be seen in SCADA.

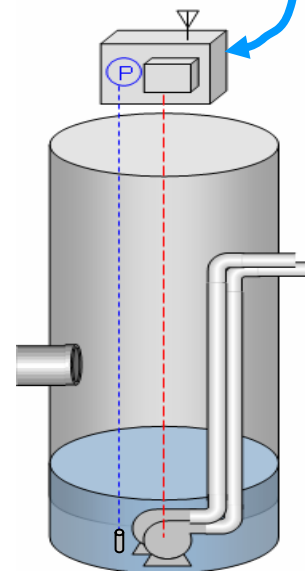
Alarms are send immediately to SCADA and can be forwarded automatically to on service man's GSM-phone or e-mail or TROUBLE TICKET maintenance work system.

Automatic **pipeline leakage detection** algorithm.

AutoLog GSM-RTUs are **remotely programmable and configurable**. User can login to the system with normal Web browser to see alarm, diagrams, trends, process views, print reports etc. from any PC or from Internet capable Mobile phone.

From the **pumping station HMI display**, service man can check the water level, pumps operating counts & -times and possible abnormal situations. Service man can set pumps start / stop / alarms levels from the HMI or SCADA (Web browser).

Communicates using GSM / GPRS networks. Also WLAN / Radio. Ask more!



The previous pump is controlled to stop pumping if the water level increases to the high level limit.

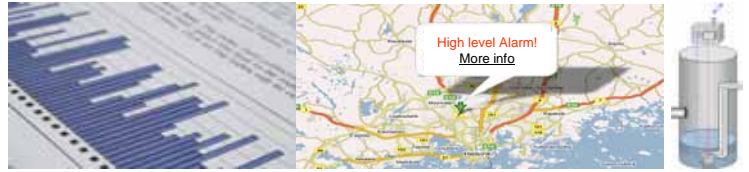
AutoLog® Pump Station

THE AUTOLOG® FAMILY

AUTOLOG® PLC
AUTOLOG® RTU

AUTOLOG® GSM
AUTOLOG® FCS

AUTOLOG® OEM
AUTOLOG® HMI



A U T O L O G ® Pump Station Automation System

AutoLog® ControlMan

AutoLog® ControlMan is hosted Internet "control room" service for remote target supervision and control. Server is hosted (24/7/365) by Verio, which is awarded as most reliable Internet hosting company in 2008. Customer doesn't need to participate on server PC investments or maintenance tasks!

AutoLog® ControlMan service collects measurement and status data from remote targets via GSM / GPRS network. Data is stored to ControlMan's database.

Collected data can be analyzed using normal web browser. User(s) just logs in to the secure ControlMan web pages and after few clicks user can see status of their remote targets, print monthly reports, analyze productivity, check maintenance...browse alarm views, trend views, process picture views, target control views, report views, trouble ticket views...

Full control, anytime - anywhere !

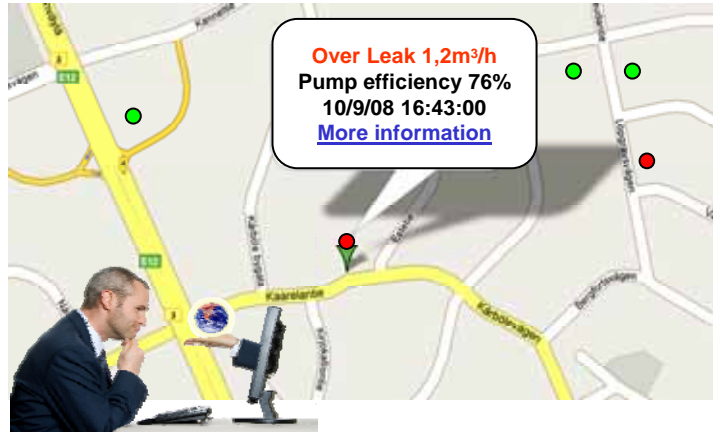
Instant alarms directly to right persons! AutoLog® ControlMan can send alarm messages immediately to service men's GSM phones and/or e-mails and reach the person whether he is on the field or behind his desk.

AutoLog® ControlMan has all the information about the configured users, user groups, GSM-RTUs, I/O points, analog input scalings, allowed phone numbers, etc. Authorized user can maintain complete system remotely using the Web browser.

Read more from web page or ask more information!



AutoLog ControlMan Internet HMI views



Features:

Map view

- Pump stations status can be seen on the dynamic map.

Alarm view

- All active alarms in the same view, pump station alarm views
- Alarm acknowledgement
- Alarm history reports
- Intelligent alarm forwarding to on duty serviceman's gsm or e-mail.

baragraph- and trend diagrams

- Fault diagnostics and reports
- Days min/max values
- Hourly averages
- Pump efficiency bargraph curve
- Pumps operating counts & times day, week, month, year diagrams.
- Power consumption day, week, month, year diagrams
- Flow rates day, week, month, year diagrams
- All information can be read to EXCEL for own reports etc.

Configuration parameters

- Can be set remotely using Web browser or GSM phone.
- Pumps start / stop / alarm levels, alarm delays
- Servicemen's gsm phone numbers and e-mail.
- Fault diagnostic alarm setpoints and energy consumption factors
- Continuous pumping alarm time
- Max pumping count / day alarm limit

Ask more information from
AutoLog® Pump Station Automation System
Features!



WWW.FF-AUTOMATION.COM



FF-AUTOMATION
 Eräkuja 2, 01600 Vantaa, Finland
 tel. +358 9 530 6310
 fax +358 9 530 6310
 e-mail: info@ff-automation.com