



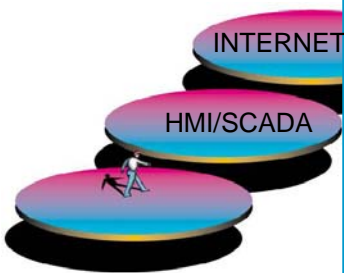
AL150CE/XP-HMI Windows CE 15" SVGA TFT Color Touchscreen with Web Studio

S O P H I S T I C A T E D ® A U T O M A T I O N

Cost-effective SCADA / HMI for small-to-large size projects.



Same development environment for creating Windows NT/2000/XP/CE and Web applications

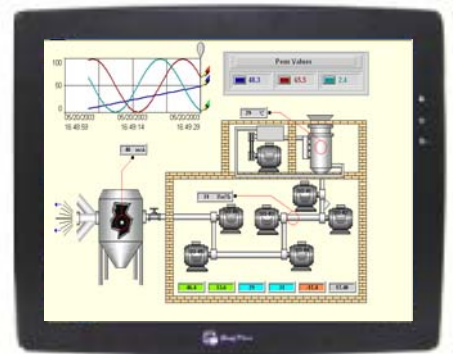


Web - Ready SCADA

Introduction

The AL150CE/XP-HMI is a miniature and compact platform that has excellent system performance and function. The x86 CPU Core provides the maximum compatibility with the vast amount of Internet content available while the intelligent integration of several other functions, including graphics, makes the AMD Geode™ LX processor a true system level multimedia solution.

The AL150CE/XP-HMI has full support for Web Studio SCADA software.



WinCE/XP 15" XGA TFT Touchscreen with Web Studio SCADA application

Specifications

- **Construction:** aluminum housing
- **Display:** 15" XGA Color TFT LCD
- **CPU and Core logic:** AMD Geode™ LX800/500MHz core processor
- **DRAM:** 256MB onboard DDR-400MHz SDRAM
- **Storage:** 44-pin IDE interface (D.O.M slot)
- **I/O:** 3 serial ports (2 physical):
Com1: RS-232/RS-485 2w/4w,
Com2: RS-232,
Com3: RS-232/RS-485 2w
1 Ethernet port (10/100Base-T)
3 USB 2.0 full-speed host (12Mbps)
1 Mini USB full-speed (12Mbps)
- **Sound output:** AC'97 Stereo codec
- **RTC:** Built-in Real Time Clock
- **Power input:** 24 VDC / 1A maximum
- **Dimension (W x H x D):** 366 x 293 x 55mm
- **Weight:** about 2.9kg
- **Fan-less** cooling system
- **Operating System:** Windows CE OR Windows XP Embedded. Look order information!
- **NEMA4/IP65** compliant front panel
- **Full support of Web Studio SCADA!**

Order:

- **When ordering define the needed Operating System (XP 1G DOM / CE 256M DOM) and the version of Web Studio Runtime license!**

LCD Display

Display type	TFT Color LCD
Display size (diagonal)	15"
Max colors	65536
Resolution	1024 x 768
Pixel pitch (HxV,mm)	0.297 x 0.297
Viewing angle (°)	65/60/70/70 (T/B/R/L)
Luminance (cd/m ²)	350
Backlight	CCFLx2
Contrast ratio	700:1

Touchscreen

Type	4-wire, analog resistive
Resolution	Continuous
Light transmission	Above 80%
Life	1 million activation minimal

Environmental

Storage temperature	-20 ~ 60 °C
Operating temperature	0 ~45 °C
Relative humidity	10% ~ 90% @ 40°C, non-condensing
Shock (operation)	10 to 25Hz (x,y,z direction) 2G 30 minutes
EMI	Complies with FCC class A
CE	Complies with EN50081-2 and EN50082-2 standards
Enclosure (Front panel)	NEMA 4 / IP 65

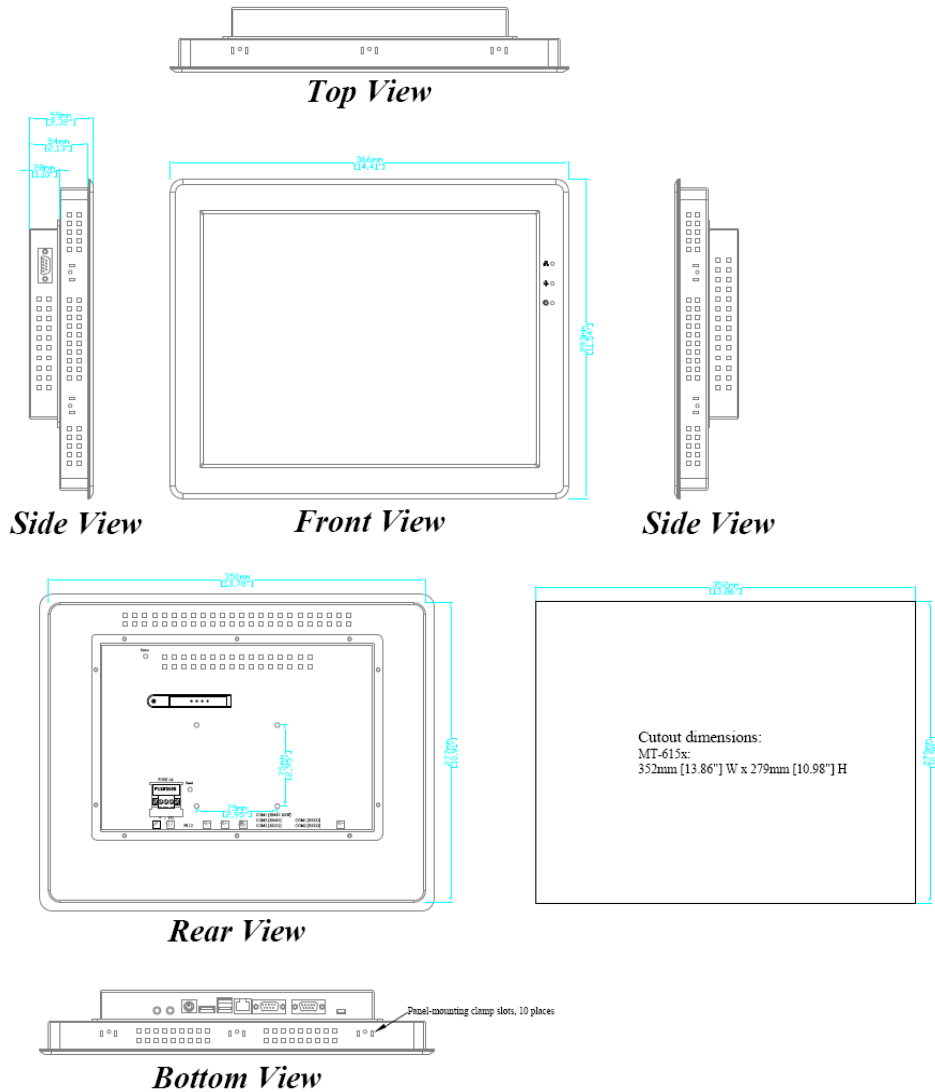
Web Studio – SCADA



THE AUTOLOG®FAMILY
 AUTOLOG®PLC AUTOLOG®GSM AUTOLOG®OEM
 AUTOLOG®RTU AUTOLOG®TETRA AUTOLOG®HMI



AL150CE/XP-HMI Windows CE 15" XGA TFT Color Touchscreen Dimensions



A	IDE interface (DOM slot)	H	Reset button
B	Fuse	I	USB Host Port x 3
C	Power connector	J	Ethernet Port 10/100 Base-T
D	VESA 75mm screw holes	K	Com1 RS485, Com3 RS485, Com3 RS232
E	Mic in	L	Com1 RS232, Com2 RS232
F	Line out	M	Mini USB port x 1
G	PS/2 Port Connector	N	D-sub VGA out



WWW.FF-AUTOMATION.COM



FF-AUTOMATION
 Eräkuja 2, 01600 Vantaa, Finland
 tel. +358 9 530 6310
 fax +358 3 5846 711
 e-mail: info@ff-automation.com
 Web: www.ff-automation.com