



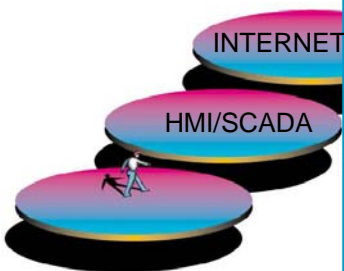
AL121CE/XP-HMI Windows CE 12.1" SVGA TFT Color Touchscreen with Web Studio

S O P H I S T I C A T E D ® A U T O M A T I O N

Cost-effective SCADA / HMI for small-to-large size projects.



Same development environment for creating Windows NT/2000/XP/CE and Web applications

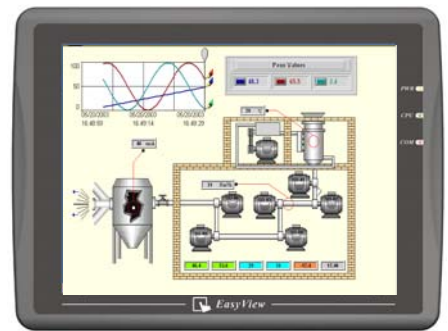


Web - Ready SCADA

**Introduction**

The AL121XP/CE-HMI is a miniature and compact platform that has excellent system performance and function. The x86 CPU Core provides the maximum compatibility with the vast amount of Internet content available while the intelligent integration of several other functions, including graphics, makes the AMD Geode™ LX processor a true system level multimedia solution.

The AL121XP/CE-HMI has full support for Web Studio SCADA software.



WinCE/XP 12.1" SVGA TFT Touchscreen with Web Studio SCADA application

**Specifications**

- **Construction:** plastic molding housing
- **Display:** 12.1" SVGA Color TFT LCD
- **CPU and Core logic:** AMD Geode™ LX800 / 500 MHz core processor
- **DRAM:** 256MB onboard DDR-400MHz SDRAM
- **Storage:** 44-pin IDE interface (Disc On Module slot)
- **I/O:** 3 serial ports (2 physical):  
Com1: RS-232/RS-485 2w/4w,  
Com2: RS-232,  
Com3: RS-232/RS-485 2w  
1 Ethernet port (10/100Base-T)  
3 USB 2.0 full-speed host (12Mbps)
- **Sound output:** AC'97 Stereo codec
- **RTC:** Built-in Real Time Clock
- **Power input:** 24 VDC / 0.8A maximum
- **Dimension (W x H x D):** 322 x 243 x 51mm
- **Weight:** about 2.1kg
- Fan-less cooling system
- **Operating System:** Windows CE OR Windows XP Embedded. Look order information!
- **NEMA4 / IP65** compliant front panel
- **Full support of Web Studio SCADA!**

**Order:**

- **When ordering define the needed Operating System (XP 1G DOM / CE 256M DOM) and the version of Web Studio Runtime license!**

*LCD Display*

Display type	TFT Color LCD
Display size (diagonal)	12.1"
Max colors	65536
Resolution	800 x 600
Pixel pitch (HxV,mm)	0.3075 x 0.3075
Viewing angle (°)	50/60/70/70 (T/B/R/L)
Luminance (cd/m <sup>2</sup> )	450
Backlight	CCFLx2
Contrast ratio	600:1

*Touchscreen*

Type	4-wire, amnalog resistive
Resolution	Continuous
Light transmission	Above 80%
Life	1 million activation minimal

*Environmental*

Storage temperature	-20 ~ 60 °C
Operating temperature	0 ~45 °C
Relative humidity	10% ~ 90% @ 40°C, non-condensing
Shock (operation)	10 to 25Hz (x,y,z direction) 2G 30 minutes
EMI	Complies with FCC class A
CE	Complies with EN50081-2 and EN50082-2 standards
Enclosure (Front panel)	NEMA 4 / IP 65

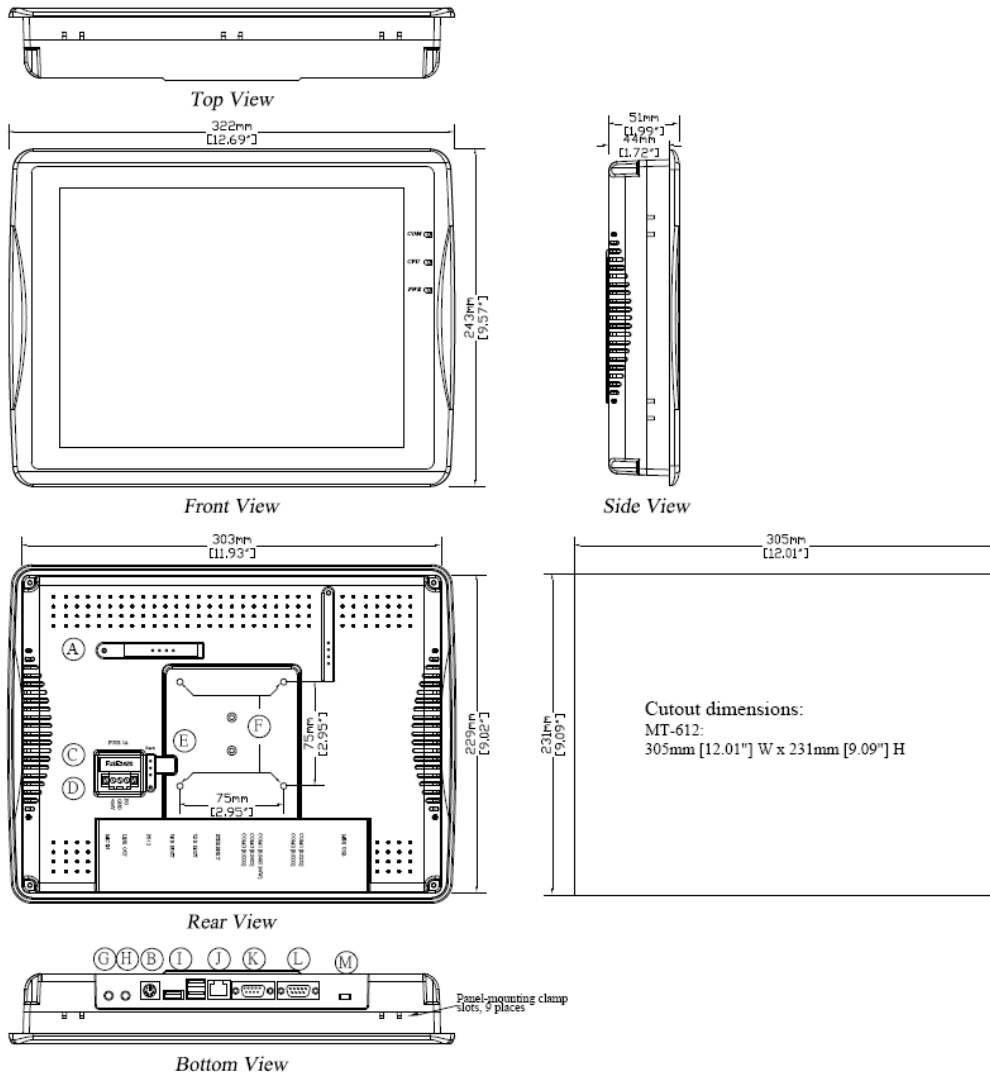
Web Studio – SCADA



THE AUTOLOG®FAMILY  
 AUTOLOG®PLC AUTOLOG®GSM AUTOLOG®OEM  
 AUTOLOG®RTU AUTOLOG®TETRA AUTOLOG®HMI



## AL121CE/XP-HMI Windows CE 12.1" SVGA TFT Color Touchscreen Dimensions



A	IDE interface (DOM slot)	H	Line Out
B	PS/2 Port Connector	I	USB Host Port x 3
C	Fuse	J	Ethernet Port 10/100 Base-T
D	Power connector	K	Com1 RS485, Com3 RS485, Com3 RS232
E	Reset button	L	Com1 RS232, Com2 RS232
F	VESA 75mm screw holes	M	Mini USB port x 1
G	Mic In		



[WWW.FF-AUTOMATION.COM](http://WWW.FF-AUTOMATION.COM)



**FF-AUTOMATION**  
Eräkuja 2, 01600 Vantaa, Finland  
tel. +358 9 530 6310  
fax +358 3 5846 711  
e-mail: [info@ff-automation.com](mailto:info@ff-automation.com)  
Web: [www.ff-automation.com](http://www.ff-automation.com)