



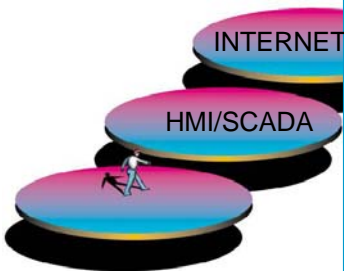
## AL121CE-HMI Windows CE 12.1" SVGA TFT Color Touchscreen with Web Studio

S O P H I S T I C A T E D ® A U T O M A T I O N

Cost-effective SCADA / HMI for small-to-large size projects.



Same development environment for creating Windows NT/2000/XP/CE and Web applications

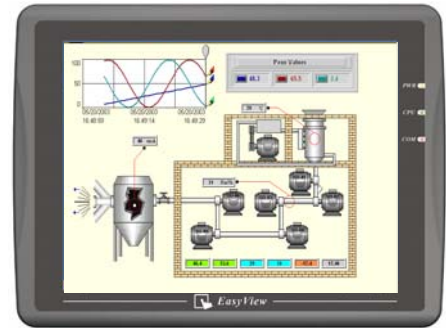


Web - Ready  
**SCADA**

### Introduction

The WinCE 12.1" SVGA TFT Color Touchscreen is designed for small size Operator Interface. It is fully supporting Web Studio SCADA software.

It has RISC kernel, the CIRRUS LOGIC EP9315 200MHz processor. It has a memory management unit (MMU), that supports Windows CE. The ARM920T's 32-bit microcontroller architecture, with a five-stage pipeline, delivers impressive performance at very low power. The EP9315 includes a hardware graphics acceleration engine that improves graphic performance and loads off graphics operations from the processor.



WinCE 12.1" SVGA TFT Touchscreen with Web Studio SCADA application

### Specifications

- **Construction:** plastic molding housing
- **Display:** 12.1" SVGA Color TFT LCD
- **CPU and core logic:** CIRRUS LOGIC® EP9315 200MHz ARM920T core processor
- **DRAM:** 64 MB on board
- **Storage:** 32 MB flash memory on board, 1 CompactFlash™ card slot, 44-pin IDE interface
- **I/O:** 3 serial ports (2 physical):  
Com1: RS-232/RS-485 2w/4w,  
Com2: RS-232,  
Com3: RS-232/RS-485 2w
- 1 Ethernet port (10/100Base-T)
- 3 USB 2.0 full-speed host (12Mbps)
- **Sound output:** 20-bits Stereo output
- **RTC:** Built-in
- **Power input:** 24 VDC, 0.5A maximum
- **Dimension (W x H x D):** 322 x 243 x 51mm
- **Weight:** about 2.1kg
- **Fan-less** cooling system
- **Windows CE .NET 4.20** OS ready installed

#### Web Studio SCADA

- Fully supports Web Studio SCADA
- >200 Communication drivers
- Easy to use – but very effective Windows NT/2000/XP development environment.

#### LCD Display

Display type	TFT Color LCD
Display size (diagonal)	12.1"
Max colors	65536
Resolution	800 x 600
Pixel pitch (HxV,mm)	0.3075 x 0.3075
Viewing angle (°)	95 (upper-lower), 120 (left-right)
Luminance (cd/m <sup>2</sup> )	250
Backlight	2 CCFL
Contrast ratio	200:1

#### Touchscreen

Type	4-wire, analog resistive
Resolution	Continuous
Light transmission	Above 80%
Life	1 million activation minimal

#### Environmental

Storage temperature	-20 ~ 60 °C
Operating temperature	0 ~45 °C
Relative humidity	10% ~ 90% @ 40°C, non-condensing
Shock (operation)	10 to 25Hz (x,y,z direction) 2G 30 minutes
EMI	Complies with FCC class A
CE	Complies with EN50081-2 and EN50082-2 standards
Enclosure (Front panel)	NEMA 4 / IP 65

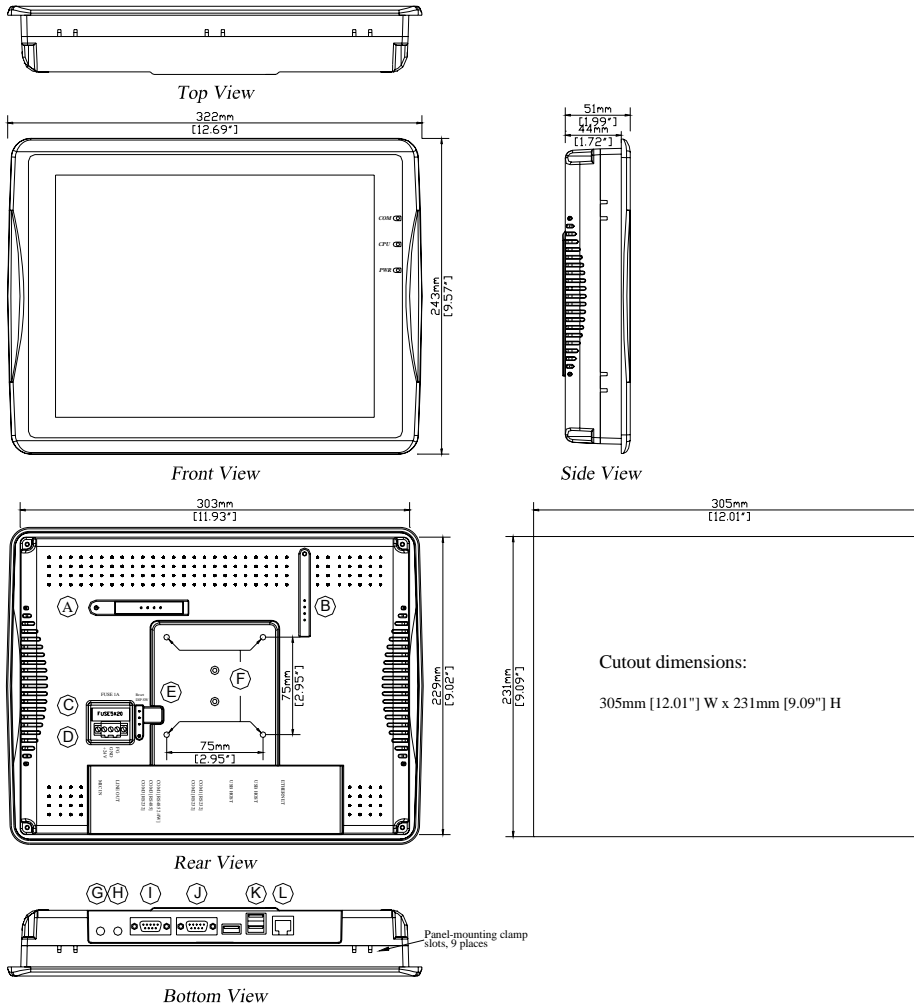
Web Studio – CE View



THE AUTOLOG® FAMILY  
 AUTOLOG®PLC    AUTOLOG®GSM    AUTOLOG®OEM  
 AUTOLOG®RTU    AUTOLOG®FCS    AUTOLOG®HMI



## AL121CE-HMI Windows CE 12.1" SVGA TFT Color Touchscreen Dimensions



A	IDE interface (DOM slot)	G	Mic In
B	Compact Flash™ slot	H	Line Out
C	Fuse	I	Com1 RS485, Com3 RS485, Com3 RS232
D	Power connector	J	Com1 RS232, Com2 RS232
E	DIP SW and Reset button	K	USB Host x 3
F	VESA 75mm screw holes	L	Ethernet port 10/100 Base-T



WWW.FF-AUTOMATION.COM



**FF-AUTOMATION**  
Eräkuja 2, 01600 Vantaa, Finland  
tel. +358 9 530 6310  
fax +358 9 530 63130  
e-mail: info@ff-automation.com